

THE CORPORATION  
OF THE TOWNSHIP OF ARMSTRONG

BY – LAW 2026-17

BEING A BY-LAW TO REGULATE ELECTION SIGNS WITHIN THE TOWNSHIP  
OF ARMSTRONG.

**WHEREAS** the Municipal Elections Act, 1996, S.O. 1996, c. 32, as amended, authorizes a municipality to pass by-laws regulating signs for safety, nuisance control, and protection of municipal property;

**AND WHEREAS** the Council of the Corporation of the Township of Armstrong wishes to establish clear, simple rules to protect public safety, maintain municipal neutrality, and safeguard municipal infrastructure during elections;

**NOW THEREFORE** the Council of the Corporation of the Township of Armstrong enacts as follows:

1. **THAT** the Regulate Election Signs Policy attached hereto as Schedule "A" be and is hereby adopted.
2. **THAT** the CAO Clerk-Treasurer may correct clerical, typographical, or grammatical errors that do not alter the intent or substance of the by-law.
3. **THAT** all by-laws or resolutions or parts thereof inconsistent with this by-law are hereby repealed.
4. **THAT** this by-law shall come into force and effect upon the final passing thereof.

READ A FIRST, SECOND AND THIRD TIME AND FINALLY PASSED IN OPEN  
COUNCIL THIS 8TH DAY OF APRIL, 2026.

  
JEAN MARC BOILEAU  
MAYOR

  
DAN THIBEAULT  
CAO/CLERK TREASURER

**SCHEDULE "A"**  
**REGULATE ELECTION SIGNS POLICY**  
*(Forms part of By-law No. 2026-17)*

**1. Table of Contents**

1. Table of Contents .....3  
2. Short Title .....4  
3. Definitions .....4  
4. Prohibited Locations .....4  
5. Polling Station Restrictions .....5  
6. Permitted Locations .....5  
7. Sign Removal .....5  
8. Enforcement .....5  
9. Administration and Severability.....6

## 2. Short Title

This policy may be referred to as the "Regulate Election Signs Policy."

---

## 3. Definitions

In this By-law:

- **"Election Signs"** means any sign, poster, banner, or device intended to promote or oppose any candidate or question in a municipal, provincial, or federal election.
  
  - **"Municipal Property"** means land, buildings, parks, facilities, or infrastructure owned or controlled by the Township of Armstrong.
  
  - **"Intersection"** means the area where two or more roads meet and includes a 6-metre sight triangle measured from the point of intersection along the edges of the roads.
  
  - **Obstructing Sightlines** including but not limited to blocking visibility of oncoming traffic, pedestrians, or traffic control devices
  
  - **"Polling Station"** means the location designated for voter to cast their ballots on advance voting or election day.
- 

## 4. Prohibited Locations

No election signs shall be placed:

- a) **On Municipal Property:** Municipal buildings, parks, facilities, or any municipal infrastructure.
  - b) **On Poles and Devices:** Hydro poles, utility poles, streetlight poles, and traffic control devices and signage.
  - c) **At Intersections:**
    - a. Within a 6-metre sight triangle at intersections
    - b. In a location that obstructs sightlines
    - c. In a manner that interferes with safe vehicle or pedestrian movement
  - d) In any location or manner that damages municipal property or infrastructure.
  - e) In any location where, in the opinion of the CAO/Clerk-Treasurer or designate, the sign creates a safety or visibility concern.
-

### **5. Polling Station Restrictions**

No election sign shall be placed or displayed on any advance voting day or on election day:

- a) within 50 metres of the lot line of the polling station property located at 35 Tenth Street East; or
- b) anywhere on the property of the polling station at 10 6th Avenue.

For the purposes of this section:

- c) The CAO/Clerk-Treasurer or designate shall determine whether an election sign complies with this section;
  - d) Any election sign placed in contravention of this section may be removed, regardless of whether it is located on private property or within a road allowance;
  - e) Any placement of election signs on or near Ministry of Transportation of Ontario (MTO) highways and roads must comply with applicable MTO regulations.
- 

### **6. Permitted Locations**

- a) On private property with the consent of the property owner, provided the sign is not located within any restricted area established by this By-law;
- b) On municipal road allowances, excluding ditches, travelled portions of the roadway, and any location that interferes with maintenance or safety.

No election sign shall be erected prior to Nomination Day.

---

### **7. Sign Removal**

All election signs must be removed within 48 hours, starting at 6:00 a.m. the day after the election.

---

### **8. Enforcement**

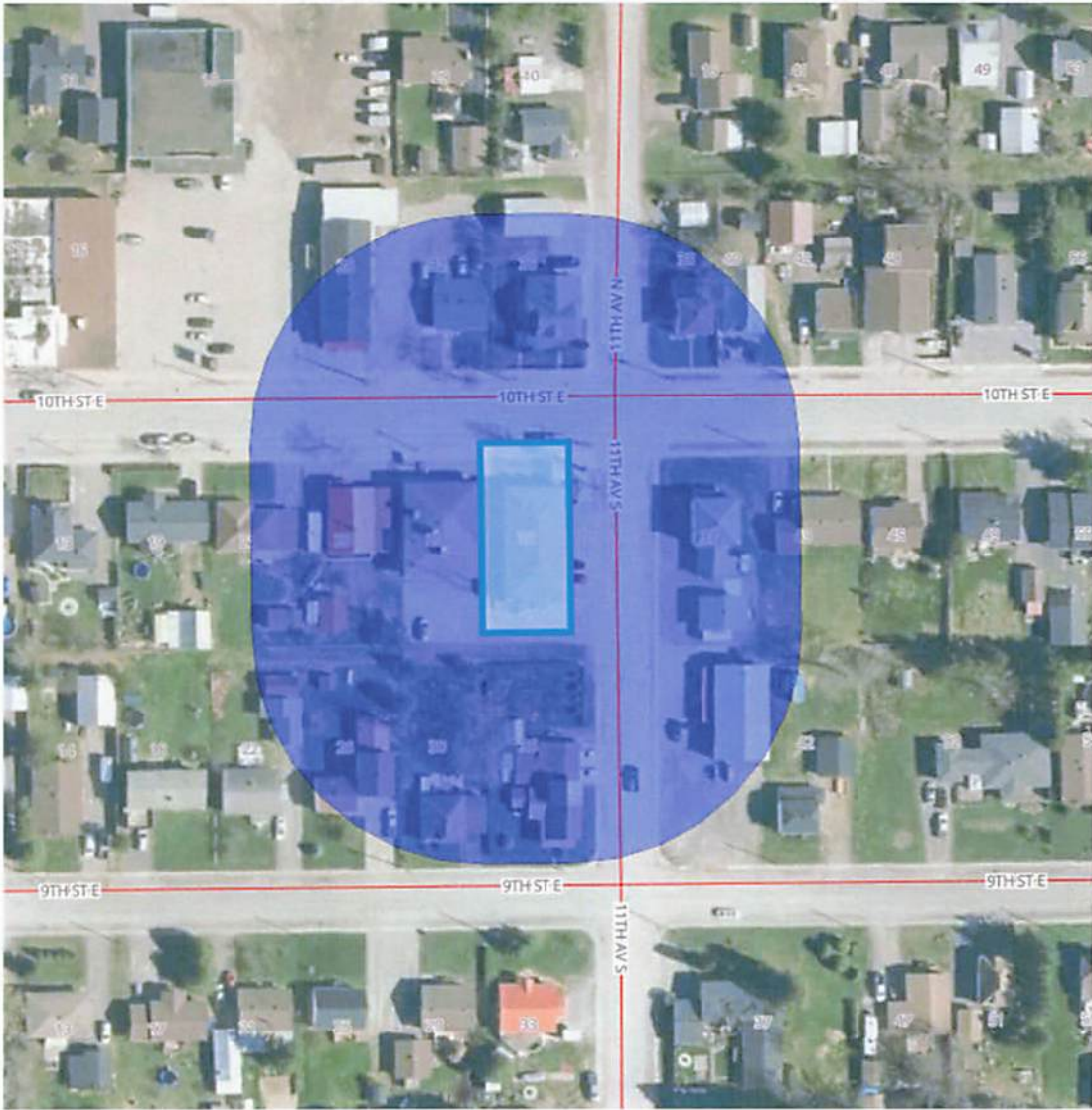
The CAO Clerk Treasurer in their sole discretion may have any election sign removed that does not comply with this By-law, without notice, and the owner will not be entitled to compensation.

---

**9. Administration and Severability**

- This By-law may be administered by the CAO Clerk Treasurer or their designate.
- If any section or provision of this By-law is declared invalid, it shall be severable and the remaining provisions shall remain in force.

**Appendix A – Polling Station Proximity Map**  
Election Sign Restriction Area – Polling Station, 35 Tenth Street East



**Notes:**

- 1. The 50-metre circle is measured from the lot line of the polling station property.
- 2. On election day, no election signs are permitted within this purple circle, including on private property or road allowances.
- 3. The Township may remove any election sign that does not comply with this By-law, without notice.

**Appendix B – Polling Station Proximity Map**  
Election Sign Restriction Area – Polling Station, 10 Sixth Avenue



**Notes:**

1. For the purposes of this section, the property boundaries of the polling station shall be determined by its lot lines.
2. On election day, no election signs are permitted within this blue shape, including on private property or road allowances.
3. The Township may remove any election sign that does not comply with this By-law, without notice.